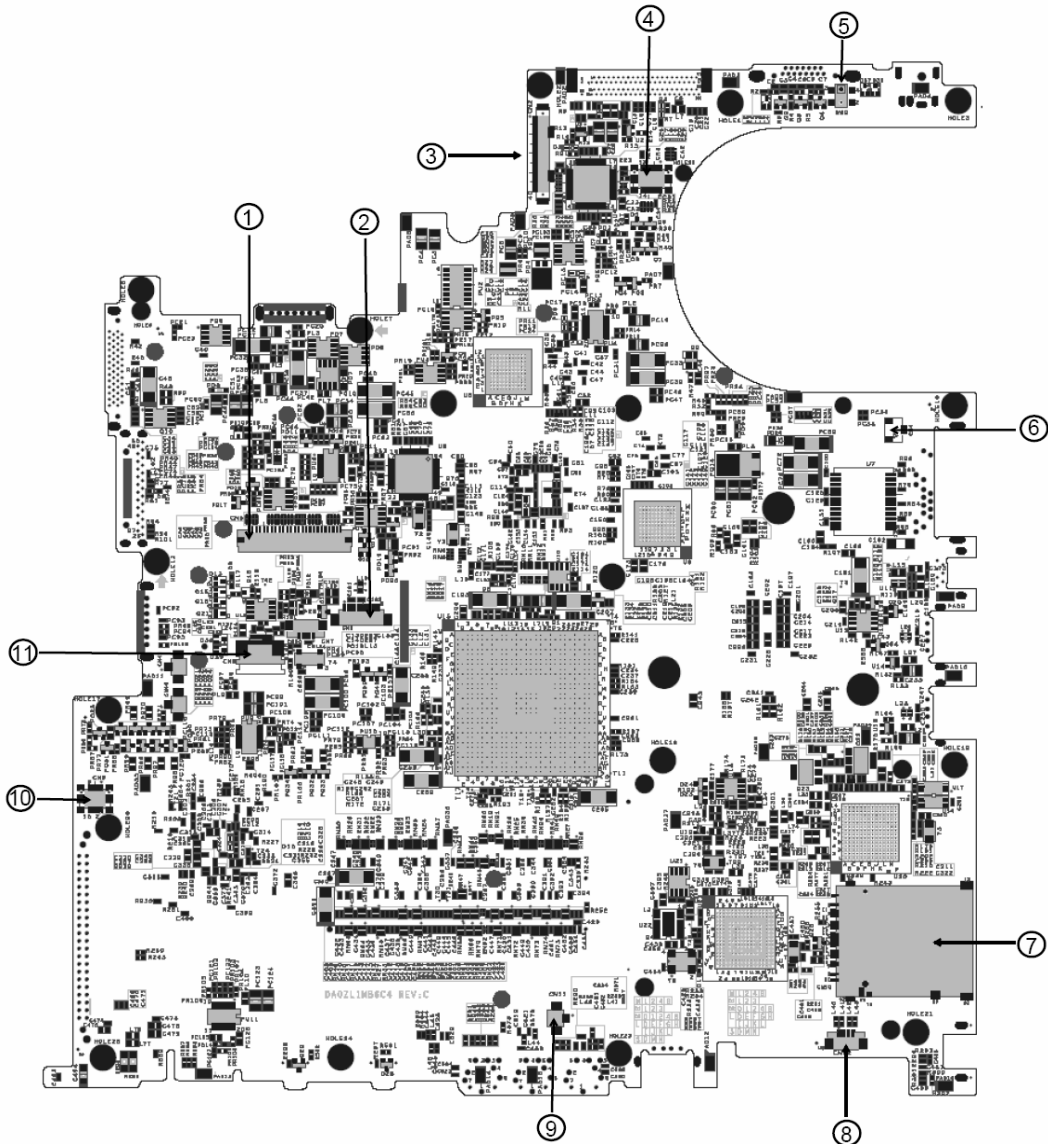


Jumper and Connector Locations

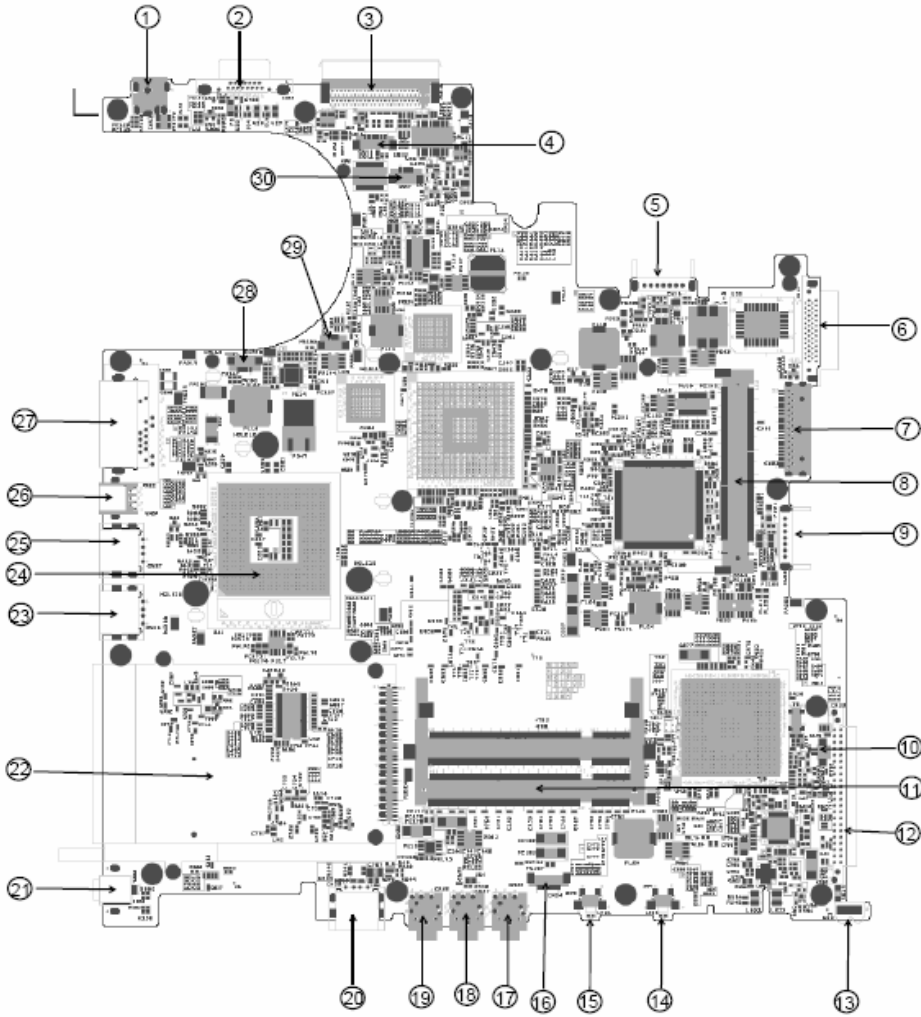
Top View



1	Keyboard Connector	CN5	7	3 in 1 Connector	CN10
2	Bluetooth Board Connector	CN6	8	Speaker Connector	CN12
3	LCD Cable Connector	CN2	9	Internal Microphone Connector	CN11
4	LED Board Connector	CN3	10	Modem Board Connector	CN9

5	Lid Switch	SW2	11	Touchpad Board Connector	CN8
6	Modem Cable Connector	CN4			

Bottom View



1	Power Jack	CN13	16	Audio Cable Connector	CN34
2	CRT	CN14	17	Line-in Connector	CN39
3	Docking	CN15	18	Headphone Out Connector	CN37
4	Audio Cable Connector	CN16	19	Microphone-in Connector	CN38
5	Main Battery Connector	CN18	20	USB Connector	CN36
6	ODD Connector	CN19	21	IEEE 1394 Connector	CN35
7	Media Bay Connector	CN23	22	PCMCIA	CN30
8	Mini PCI Slot	CN24	23	USB Connector	CN28
9	Second Battery Connector	CN26	24	CPU Socket	U41
10	RTC Battery Connector	CN31	25	USB Connector	CN27
11	DDR DIMM Connector	CN32	26	S-Video	CN25
12	HDD Connector	CN33	27	RJ45 and RJ11 Connector	CN22
13	IR	U53	28	LAN Cable Connector	CN21

14	Bluetooth Switch	SW4	29	FAN Connector	CN20
15	Wireless Switch	SW3	30	LAN Cable Connector	CN17